

KITTTITAS COUNTY COMMUNITY DEVELOPMENT SERVICES

411 N. Ruby St., Suite 2, Ellensburg, WA 98926

CDS@CO.KITTTITAS.WA.US

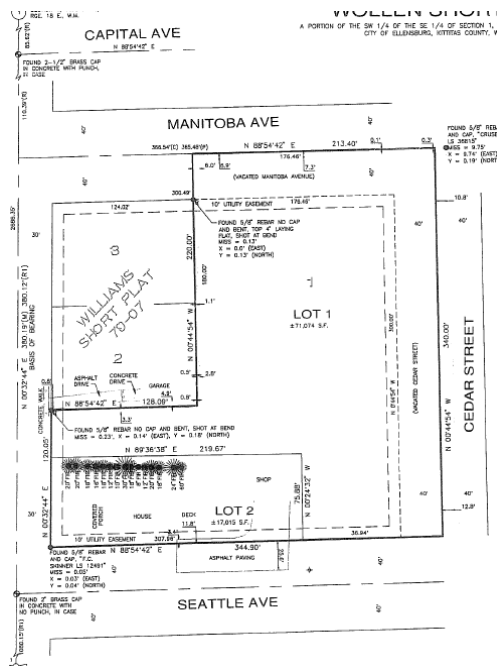
Office (509) 962-7506

Fax (509) 962-7682

NOTICE Wollen Short Plat (SP-08-05)

Notice is hereby given that on April 24, 2008 conditional preliminary approval has been given to Gordon & Cathy Wollen, property owners for short subdivision of 2.0 acres into 2 (two) lots. Location: east of the City of Ellensburg at 510 South Willow, Ellensburg, WA 98926 in a portion of Section 01, T17N., R18E., W.M. in Kittitas County. Map number 17-18-01068-0001.

Said proposed division may be appealed to the Board of County Commissioners upon the request of any aggrieved party within 10 working days. The appeal deadline is May 9, 2008 at 5:00p.m.



Original short plats and related information may be examined during the business hours at the Kittitas County Community Development Services Department 411 N. Ruby Suite 2 Ellensburg, WA 98926.

You may appeal this determination pursuant to KCC 15A.07.010 by submitting specific factual objections and a fee of \$200 to the Kittitas County Board of Commissioners (205 W 5th, Room 108) by May 9, 2008 at 5:00 p.m.

DARRYL PIERCY, DIRECTOR

ALLISON KIMBALL, ASSISTANT DIRECTOR

COMMUNITY PLANNING • BUILDING INSPECTION • PLAN REVIEW • ADMINISTRATION • PERMIT SERVICES • CODE ENFORCEMENT • FIRE INVESTIGATION